

2006 Product Catalogue



**37 and 39 Grenfell Crescent,
Nepean, ON K2G 0G3
Hours of Operation: Monday-Friday 8:00 AM – 5:00 PM
Phone: (613) 226-1102
Fax: (613) 226-6097
e-mail: info@louconmetal.com
web: www.louconmetal.com**

We accept Visa, MasterCard and Interac





Although every effort has been taken to check the accuracy of information contained herein, we cannot assume responsibility for errors.

Table of Contents

Page		Page	
4	Services	38	Steel Cold Rolled Perforated Sheets
5	Steel Angles	39	Steel Galvanized Roof Deck RD-938
6	Steel Hot-Rolled Flats	40	Steel Welded Wire Construction Fabric
7	Steel Hot-Rolled Rounds	41	Steel Architectural Welded Wire Mesh
8	Steel Rebar	42	Steel Ladder Rung
9	Steel Hot-Rolled Squares	43	Steel Welded Bar Grating
10	Steel Bar-Size Channels	44	Steel Galvanized Deck Span Planks
11	Steel Structural Channels	45	Steel Galvanized Deck Span Planks
12	Steel S Beams	46	Aluminum Angles Architectural 6063-T5
13	Steel Wide Flange Beams	47	Aluminum Angles Structural 6061-T6
14	Steel Square Tubes	48	Aluminum Flats 6061-T6
15	Steel Rectangular Tubes	49	Aluminum Rounds 6061-T6
16	Steel Pipe Sizes	50	Aluminum Channels
17	Steel Welded Round Tubes	51	Aluminum Pipe Sizes and Round Tubes
18	Steel Seamless DOM Tubes	52	Aluminum Square Tube Architectural
19	Steel Cold-Rolled Rounds C 1018/1020	53	Aluminum Rectangular Tube Architectural
20	Steel Cold-Rolled Rounds C 12L14	54	Aluminum Square Tube Structural
21	Steel Cold-Rolled Rounds C 1144 Stressproof	55	Aluminum Sheets
22	Steel Round Drill Rods AISI W-1 and O-1	56	Aluminum Plates
23	Steel Threaded Rods AISI C 1010 UNC	57	Aluminum Floor Plates
24	Steel Cold-Rolled Flats C 1018/1020	58	Stainless Angles
25	Steel Cold-Rolled Hexagons C 12L14	59	Stainless Flats
26	Steel Cold-Rolled Squares C 1018/1020	60	Stainless Rounds
27	Steel Hot-Rolled Sheets	61	Stainless Squares
28	Steel Plates	62	Stainless Pipes and Welded Round Tubes
29	Steel Floor Plates	63	Stainless Square Tubes
30	Steel Abrasion Resistant Q & T Plates	64	Stainless Sheets and Plates
31	Steel Cold-Rolled Sheets	65	Brass Rounds B16-360
32	Steel Galvanized Sheets	66	Brass Flats B16-360
33	Steel Satin Coat (Galvanneal) Sheets	67	Brass Squares B16-360
34	Steel Regular Expanded Sheets	68	Brass Hexagons B16-360
35	Steel Flattened Expanded Sheets	69	Bronze Rounds SAE 660
36	Steel Expanded Structural Grating	70	Decimal Equivalents
37	Expanded Grating Selection Chart	70	Common Conversions

In addition to our full line of metal products, we provide the following value-added services:

- Cut to Length
 - Oxy-actylene
 - Bandsaw
 - Bar Shear
- Shear to Size
 - 1/16" thick through 3/8" thick
- Track torch cutting (for heavy plates)
- Free Delivery Service
 - Available weekdays in Ottawa for orders exceeding \$150.00
 - Available one day per week in Arnprior and Kemptville (> \$150)
- Sheet and Plate Forming
 - Capacity up to 12' long of 3/8" mild steel, 7' long of 1/2" mild steel
- Sheet and Plate Rolling
 - Capacity up to 8' long of 1/4" mild steel
- Hole Drilling
- Hole Punching (round, square, oblong)
- Bar Threading (UNC)
- Beam Splices
- Brick Flanges
- Pipe Bending
- Welding

Please call, fax or e-mail us for a quote on your processing requirements.


STEEL ANGLES

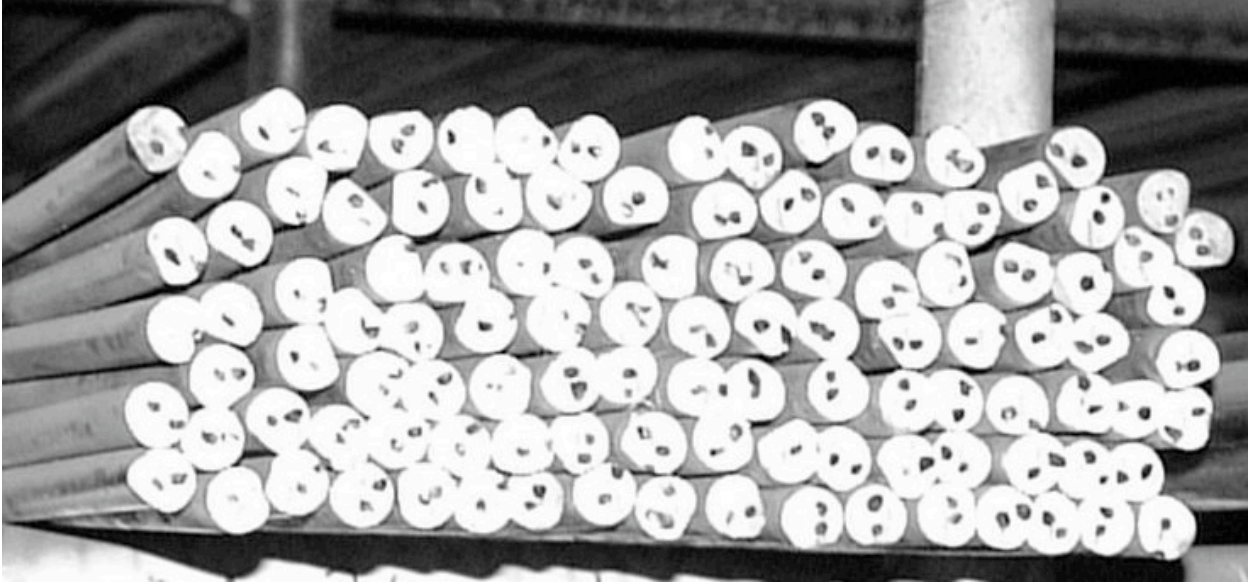
Stock Lengths: 20 ft to 2 1/2", 40 ft for 3" and over

EQUAL LEG		UNEQUAL LEG	
Size Inches	Weight lbs per ft	Size Inches	Weight lbs per ft
1/2 X 1/2 X 1/8	.38		
3/4 X 3/4 X 1/8	.59		
1 X 1 X 1/8	.8		
3/16	1.16		
1/4	1.49		
1 1/4 X 1 1/4 X 1/8	1.01		
3/16	1.48		
1/4	1.92		
1 1/2 X 1 1/2 X 1/8	1.23		
3/16	1.8		
1/4	2.34		
1 3/4 X 1 3/4 X 1/8	1.44		
1/4	2.77		
2 X 2 X 1/8	1.65	2 X 1 1/2 X 3/16	2.12
3/16	2.44		
1/4	3.19		
3/8	4.70		
2 1/2 X 2 1/2 X 3/16	3.07	2 1/2 X 2 X 1/4	3.62
1/4	4.1		
3/8	5.9		
3 X 3 X 3/16	3.7	3 X 2 X 3/16	3.1
1/4	4.9		
3/8	7.2	3/8	5.9
1/2	9.4	3 X 2 1/2 X 1/4	4.5
3 1/2 X 3 1/2 X 1/4	5.8	3 1/2 X 2 1/2 X 1/4	4.9
3/8	8.5	3 1/2 X 3 X 3/8	7.9
4 X 4 X 1/4	6.6	4 X 3 X 1/4	5.8
3/8	9.8	3/8	8.5
1/2	12.8		
5 X 5 X 3/8	12.3	5 X 3 X 1/4	6.6
1/2	16.2	5/16	8.2
		5 X 3 1/2 X 1/4	7.0
		5/16	8.7
		3/8	10.4
6 X 6 X 3/8	14.9	6 X 4 X 5/16	10.3
1/2	19.6	3/8	12.3
		1/2	16.2
8 X 8 X 1/2	26.4	8 X 4 X 1/2	19.6


HOT ROLLED STEEL BARS
Mild Steel Flats

Stock Lengths- 20 ft

Size Inches	Weight lbs per ft	Size Inches	Weight lbs per ft
1/8 X 1/2	0.2125	3/8 X 1	1.28
3/4	0.3188	1 1/4	1.59
1	0.425	1 1/2	1.91
1 1/4	0.5313	2	2.55
1 1/2	0.637	2 1/2	3.19
2	0.85	3	3.83
2 1/2	1.0625	4	5.1
3	1.275	5	6.38
4	1.7	6	7.65
5	2.125	8	10.2
6	2.55	1/2 X 1	1.7
3/16 X 1/2	0.319	1 1/2	2.55
3/4	0.478	2	3.4
1	0.638	2 1/2	4.25
1 1/4	0.797	3	5.1
1 1/2	0.956	4	6.8
2	1.28	5	8.5
2 1/2	1.59	6	10.2
3	1.91	8	13.6
4	2.55	5/8 X 2	4.25
5	3.19	3	6.38
6	3.83	4	8.5
1/4 X 1/2	0.425	3/4 X 1 1/2	3.825
3/4	0.637	2	5.1
1	0.85	3	7.65
1 1/4	1.06	4	10.2
1 1/2	1.28	5	12.75
2	1.7	6	15.3
2 1/2	2.13	8	20.4
3	2.55	1 X 2	6.8
3 1/2	2.98	3	10.2
4	3.4	4	13.6
5	4.25	5	17
6	5.1	6	20.4
8	6.8	8	27.2



HOT ROLLED STEEL BARS

Mild Steel Rounds

Stock Lengths 20 ft

Diameter Inches	Weight lbs per ft
1/4	.167
5/16	.261
3/8	.376
7/16	.511
1/2	.668
9/16	.845
5/8	1.043
3/4	1.5
7/8	2.04
1	2.67
1 1/4	4.17
1 3/8	5.05
1 1/2	6.01
2	10.68
3	24.03
4	42.73



STEEL REBAR

Deformed Metric Rounds

Stock Lengths 6 metres

Size millimetres	Weight lbs per ft
10 M	0.528
15 M	1.055
20 M	1.583
25 M	2.638



**HOT ROLLED STEEL
BARS**

Mild Steel Squares

Stock Lengths 20 ft

Size Inches	Weight lbs per ft
3/8	.478
1/2	.85
5/8	1.33
3/4	1.91
7/8	2.60
1	3.4
1 1/4	5.31
1 1/2	7.65
2	13.6



STEEL CHANNELS

Bar Sizes

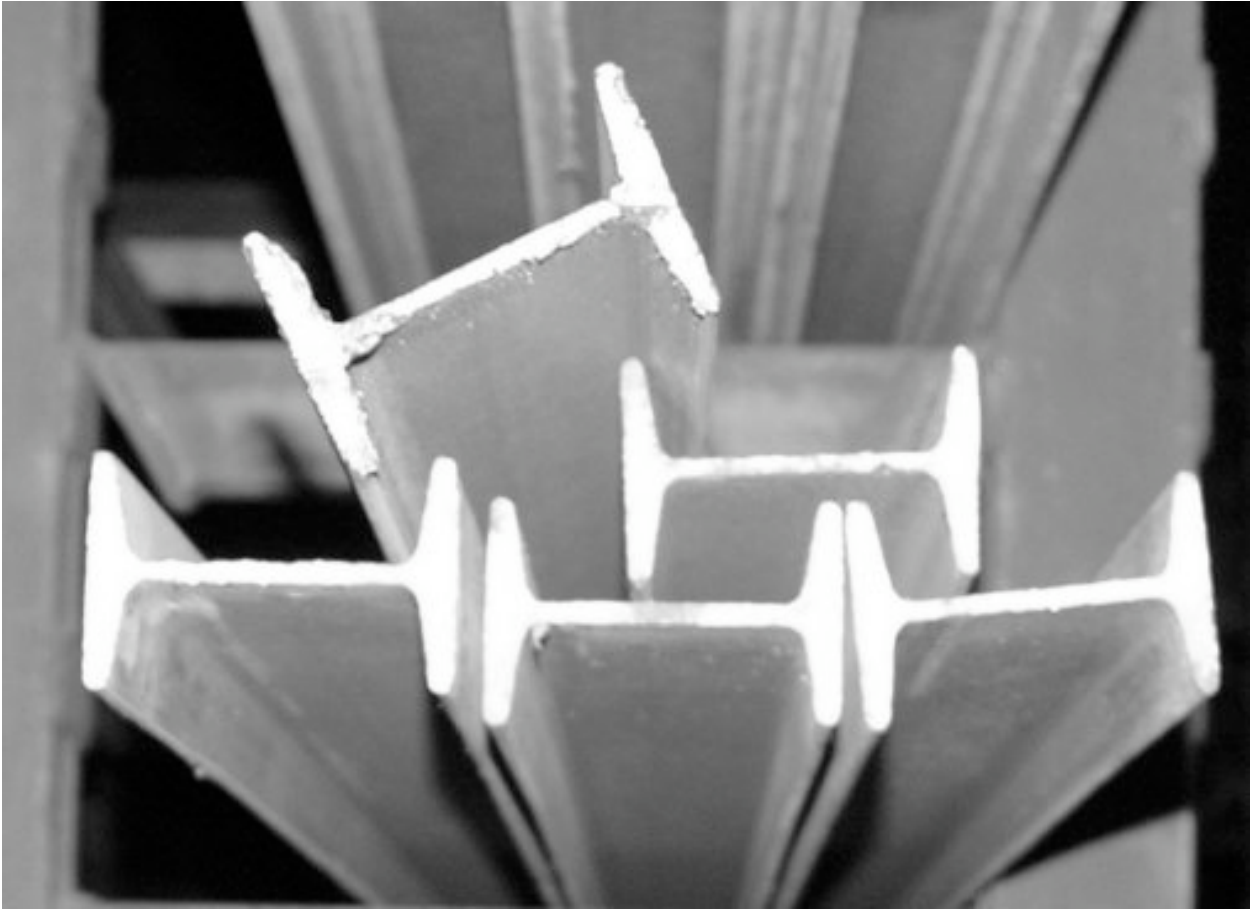
Stock Lengths 20 ft

Size Inches	Weight lbs per ft
1 X 1/2 X 1/8	0.8
1 1/4 X 1/2 X 1/8	1
1 1/2 X 1/2 X 1/8	1.13
2 X 1 X 1/8	1.78
2 X 1 X 3/16	2.57



**STRUCTURAL
STEEL CHANNELS**
Stock Lengths 40 ft

IMPERIAL					METRIC						
NAME		Flange		Web	Section	NAME		Flange		Web	Section
Depth	Weight	Width	Thick-ness	Thick-ness	Mod-ulus	Depth	Weight	Width	Thick-ness	Thick-ness	Mod-ulus
Inches @	lbs per ft	Inches	Inches	Inches	in_	mm @	KG per metre	mm	mm	mm	10_mm_
C 3 @ 4.1		1.41	.273	.170	1.11	C 75 @ 6		35	6.9	4.3	17.6
5		1.5	.273	.258	1.23	7		37	6.9	6.6	19.7
6		1.6	.273	.356	1.38	9		40	6.9	9.0	22.3
C 4 @ 5.4		1.58	.296	.184	1.93	C 100 @ 8		40	7.5	4.7	31.6
7.25		1.72	.296	.321	2.30	11		43	7.5	8.2	37.4
C 5 @ 6.7		1.75	.320	.190	3.00	C 130 @ 10		44	8.1	4.8	48.6
9		1.88	.320	.325	3.56	13		47	8.1	8.3	57.6
C 6 @ 8.2		1.92	.343	.200	4.37	C 150 @ 12		48	8.7	5.1	70.6
10.5		2.03	.343	.314	5.07	16		51	8.7	8.0	81.9
C 7 @ 9.8		2.09	.366	.210	6.09	C 180 @ 15		53	9.3	5.3	99.6
C 8 @ 11.5		2.26	.390	.220	8.15	C 200 @ 17		57	9.9	5.6	133
13.75		2.34	.390	.303	9.03	21		59	9.9	7.7	147
C 9 @ 13.4		2.43	.413	.233	10.6	C 230 @ 20		61	10.5	5.9	173
C 10 @ 8.4		1.5	.280	.170	6.40	C 250 @ 12.5		38	7.1	4.3	105
15.3		2.6	.436	.240	13.5	23		65	11.1	6.1	219
C 12 @ 10.6		1.5	.309	.190	9.23	C 310 @ 15.8		38	7.8	4.8	151
20.7		2.94	.501	.282	21.5	31		74	12.7	7.2	351


STEEL STANDARD BEAMS

IMPERIAL					METRIC							
NAME		Flange		Web	Section	NAME		Actual Depth	Flange		Web	Section
Depth	Weight	Width	Thick- ness	Thick- ness	Mod- ulus	Rough Depth	Weight KG per metre		Width	Thick- ness	Thick- ness	Mod- ulus
Inches	X lbs per ft	Inches	Inches	Inches	in_	mm X		mm	mm	mm	mm	10_mm_
S 3 X 5.7		2.33	.260	.170	1.68	S 75 X 8		76	59	6.6	4.3	27.4
S 4 X 7.7		2.66	.293	.193	3.04	S 100 X 11		102	67	7.4	4.8	49.4
S 5 X 10		3.0	.326	.214	4.92	S 130 X 15		127	76	8.3	5.3	80.4
S 6 X 12.5		3.33	.359	.232	7.37	S 150 X 19		152	84	9.1	5.8	119
S 8 X 18.4		4.0	.425	.271	14.4	S 200 X 27		203	102	10.8	6.9	237


STEEL WIDE FLANGE BEAMS

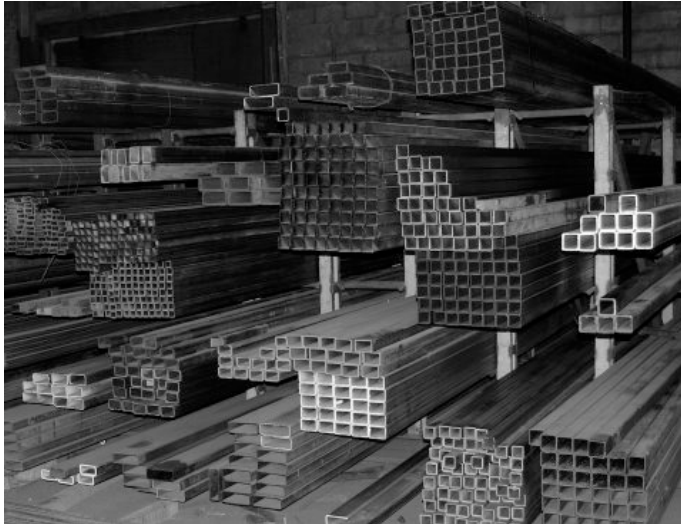
IMPERIAL						METRIC							
NAME		Actual Depth Inches	Flange		Web Thickness Inches	Section Modulus in_	NAME		Actual Depth mm	Flange		Web Thickness mm	Section Modulus 10_mm_
Rough Depth Inches	Weight lbs per ft		Width Inches	Thick-ness Inches			Rough Depth mm	Weight KG per metre		Width mm	Thick-ness mm		
W 4 X 13		4.16	4.06	.345	.280	5.46	W 100 X 19	106	103	8.8	7.1	89.9	
W 6 X 15		5.99	5.99	.260	.230	9.72	W 150 X 22	152	152	6.6	5.8	159	
20		6.20	6.02	.365	.260	13.4	30	157	153	9.3	6.6	219	
25		6.38	6.08	.455	.320	16.7	37	162	154	11.6	8.1	274	
W 8 X 14		7.98	5.21	.250	.195	11.8	W 200 X 21	203	133	6.4	5.0	193	
18		8.14	5.25	.330	.230	15.2	27	207	133	8.4	5.8	249	
21		8.28	5.27	.400	.250	18.2	31	210	134	10.2	6.4	299	
24		7.93	6.50	.400	.245	20.9	36	201	165	10.2	6.2	342	
28		8.06	6.54	.465	.285	24.3	42	205	166	11.8	7.2	399	
31		8.0	8.00	.435	.285	27.5	46	203	203	11.0	7.2	448	
W 10 X 22		10.17	5.75	.360	.240	23.2	W 250 X 33	258	146	9.1	6.1	379	
W 10 X 26		10.33	5.77	.440	.260	27.9	W 250 X 39	262	147	11.2	6.6	459	
W 10 X 33		9.73	7.96	.435	.290	35.0	W 250 X 49	247	202	11.0	7.4	572	
W 12 X 26		12.22	6.49	.380	.230	33.4	W 310 X 39	310	165	9.7	5.8	549	


**SQUARE STEEL TUBING or
HOLLOW STRUCTURAL SECTIONS (H.S.S)**

Stock Lengths 24 ft to 5", 48 ft for 6" and over

IMPERIAL					METRIC				
Size Inches	Thickness Inches	Weight Lbs per ft.	Area Sq. Inches	Radius of Gyration (in.)	Size Millimeters	Thickness Millimeters	Mass KG per M	Area Sq. mm	Radius of Gyration (mm)
1/2 X 1/2 X .065		.384			12.7 X 12.7 X 1.65		.576		
3/4 X 3/4 X .083		.75			19 X 19 X 2.12		1.12		
1 X 1 X .065		.83			25.4 X 25.4 X 1.65		1.24		
X .100		1.14	0.335	.359	X 2.54		1.69	216	9.12
1 1/4 X 1 1/4 X .100		1.48	0.436	.461	31.8 X 31.8 X 2.54		2.20	281	11.7
1 1/2 X 1 1/2 X .065		1.269			38.1 X 38.1 X 1.65		1.90		
X .100		1.82	0.535	.563	X 2.54		2.71	345	14.3
X .188		3.05	0.896	.520	X 4.78		4.54	578	13.2
2 X 2 X .100		2.58	0.734	.769	50.8 X 50.8 X 2.54		3.87	474	19.5
X .125		3.06	0.899	.756	X 3.18		4.55	580	19.2
X .188		4.33	1.27	.724	X 4.78		6.45	821	18.4
X .250		5.43	1.60	.693	X 6.35		8.05	1030	17.6
2 1/2 X 2 1/2 X .100		3.18	.934	.973	63.5 X 63.5 X 2.54		4.73	603	24.7
X .125		3.91	1.15	.961	X 3.18		5.82	741	24.4
X .188		5.59	1.64	.929	X 4.78		8.35	1060	23.6
X .237 FC		6.81	1.95	.909	X 6.02 FC		10.2	1260	23.1
3 X 3 X .125		4.76	1.40	1.17	76.2 X 76.2 X 3.18		7.09	903	29.6
X .188		6.90	2.03	1.13	X 4.78		10.3	1310	28.8
X .250		8.80	2.59	1.10	X 6.35		13.1	1670	28.0
3 1/2 X 3 1/2 X .125		5.59	1.64	1.37	88.9 X 88.9 X 3.18		8.31	1060	34.7
X .188		8.17	2.40	1.34	X 4.78		12.2	1550	34.0
X .250		10.5	3.08	1.31	X 6.35		15.6	1990	33.2
4 X 4 X .125		6.44	1.89	1.57	101.6 X 101.6 X 3.18		9.58	1220	39.9
X .188		9.43	2.77	1.54	X 4.78		14.1	1790	39.2
X .250		12.2	3.60	1.51	X 6.35		18.2	2320	38.4
X .375		17.3	5.08	1.45	X 9.53		25.7	3280	36.8
5 X 5 X .188		12.0	3.53	1.95	127 X 127 X 4.78		17.9	2280	49.6
X .250		15.6	4.59	1.92	X 6.35		23.2	2960	48.8
6 X 6 X .188		14.6	4.28	2.36	152.4 X 152.4 X 4.78		21.7	2760	59.9
X .250		19.0	5.60	2.33	X 6.35		28.3	3610	59.2
8 X 8 X .250		26.2	7.60	3.15	203.2 X 203.2 X 6.35		38.4	4900	79.9

FC Denotes Flash Controlled


**RECTANGULAR STEEL TUBING or
HOLLOW STRUCTURAL SECTIONS (H.S.S)**

Stock Lengths 24 ft to 5", 48 ft for 6" and over

IMPERIAL						METRIC					
Size Inches	Wall Inches	Weight Lbs per ft.	Area Sq. Inches	Radius of Gyration		Size Millimeters	Wall mm	Mass KG per M	Area Sq. mm	Radius of Gyration	
				r x-x (in.)	r y-y (in.)					r x-x (mm)	r y-y (mm)
2 X 1 X .100		1.82	.535	.689	.398	50.8 X 25.4 X 2.54		2.71	345	17.5	10.1
2 X 1 1/2 X .125		2.50				50.8 X 38.1 X 3.18		3.75			
2 1/2 X 1 1/2 X .188		4.32	1.27	.851	.565	63.5 X 38.1 X 4.78		6.43	821	21.6	14.3
3 X 1 X .125		3.05	.897	.980	.401	76.2 X 25.4 X 3.18		4.54	579	24.9	10.2
3 X 1 1/2 X .125		3.48	1.02	1.05	.606	76.2 X 38.1 X 3.18		5.17	660	26.6	15.4
3 X 2 X .125		3.90	1.15	1.10	.800	76.2 X 50.8 X 3.18		5.81	741	27.8	20.3
X .188		5.59	1.64	1.06	.772	X 4.78		8.35	1060	27.0	19.6
X .250		7.11	2.09	1.03	.740	X 6.35		10.6	1350	26.1	18.8
4 X 2 X .125		4.76	1.40	1.42	.827	101.6 X 50.8 X 3.18		7.09	903	36.1	21.0
X .188		6.90	2.03	1.38	.799	X 4.78		10.3	1310	35.1	20.3
X .250		8.80	2.59	1.35	.768	X 6.35		13.1	1670	34.2	19.5
4 X 3 X .125		5.59	1.64	1.51	1.21	101.6 X 76.2 X 3.18		8.31	1060	38.3	30.7
X .188		8.17	2.40	1.48	1.18	X 4.78		12.2	1550	37.5	30.0
X .250		10.5	3.08	1.44	1.15	X 6.35		15.6	1990	36.7	29.3
5 X 2 X .188		8.16	2.40	1.69	.812	127.0 X 50.8 X 4.78		12.2	1550	43.1	20.7
5 X 2 1/2 X .188		8.80	2.59	1.76	1.02	127.0 X 63.5 X 4.78		13.1	1670	44.6	25.9
6 X 2 X .125		6.31	1.86	2.05	.858	152.4 X 50.8 X 3.18		9.39	1200	52.1	21.8
X .188		9.42	2.77	2.00	.829	X 4.78		14.1	1790	50.8	21.1
6 X 3 X .188		10.7	3.15	2.13	1.24	152.4 X 76.2 X 4.78		15.9	2030	54.0	31.4
X .250		13.9	4.09	2.09	1.20	X 6.35		20.7	2640	53.0	30.6
6 X 4 X .188		12.0	3.52	2.22	1.63	152.4 X 101.6 X 4.78		17.9	2280	56.5	41.3
X .250		15.6	4.59	2.19	1.60	X 6.35		23.2	2960	55.7	40.6
7 X 5 X .250		19.0	5.60	2.61	2.01	177.8 X 127.0 X 6.35		28.3	3610	66.2	51.1
8 X 2 X .188		11.9	3.50	2.59	.85	203.2 X 50.8 X 4.78		17.7	2260	65.8	21.6
8 X 3 X .188		13.3	3.89	2.76	1.27	203.2 X 76.2 X 4.78		19.8	2520	70.0	32.3
8 X 4 X .375		27.5	8.08	2.77	1.59	203.2 X 101.6 X 9.53		40.9	5210	70.3	40.5


STEEL PIPE SIZES

A53 Grade B Untested

Stock Lengths 21 ft

Nominal Size Inches	Outside Diameter Inches	Schedule					
		40 (Standard Wall)			80 (Heavy Wall)		
		Wall	Inside Dia.	lbs per ft.	Wall	Inside Dia.	lbs per ft.
1/8	0.405	0.068	0.269	0.2447			
1/4	0.54	0.088	0.364	0.4248			
3/8	0.675	0.091	0.493	0.5676			
1/2	0.84	0.109	0.622	0.851	0.147	0.546	1.088
3/4	1.05	0.113	0.824	1.131	0.154	0.742	1.474
1	1.315	0.133	1.049	1.679	0.179	0.957	2.172
1 1/4	1.66	0.14	1.38	2.273	0.191	1.278	2.997
1 1/2	1.9	0.145	1.61	2.718	0.2	1.5	3.631
2	2.375	0.154	2.067	3.653	0.218	1.939	5.022
2 1/2	2.875	0.203	2.469	5.793	0.276	2.323	7.661
3	3.5	0.216	3.068	7.576	0.3	2.9	10.25
3 1/2	4	0.226	3.548	9.109	0.318	3.364	12.51
4	4.5	0.237	4.026	10.79	0.337	3.826	14.98
5	5.563	0.258	5.047	14.62			
6	6.625	0.28	6.065	18.97			
8	8.625	0.322	7.981	28.55			


Welded Round Steel Tubes

Commercial Quality

Stock Lengths - 20 or 24 ft (please inquire)

Outside Diameter inches	Wall Thickness inches	Inside Diameter inches	Weight lbs per ft
1/2 X	.049	.402	.236
	.065	.37	.302
5/8 X	.065	.495	.389
3/4 X	.065	.62	.4755
7/8 X	.065	.745	.562
1 X	.065	.87	.6491
	.120	.76	1.128
1 1/8 X	.065	.995	.7359
1 1/4 X	.125	1.0	1.448
1 1/2 X	.065	1.37	.9962
	.125	1.25	1.769
1.66 X	.125	1.41	2.05
1 3/4 X	.120	1.5	2.089
2 X	.125	1.75	2.503
3 X	.125	2.75	3.838
6 5/8 X	.188	6.25	12.9



Round Steel Seamless Tubes

Drawn Over Mandrel

Stock Lengths - 17 to 24 ft randoms

Outside Diameter inches	Wall Thickness inches	Inside Diameter inches	Weight lbs per ft
1.0 X .250		.500	2.003
1.25 X .250		.750	2.67
1.5 X .375		.750	4.51
1.625 X .250		1.125	3.671
1.75 X .500		.750	6.68
2 X .375		1.25	6.508
	.500	1.00	8.02
2.25 X .375		1.50	7.509
2.5 X .250		2.00	6.008
	.500	1.50	10.68
3.0 X .500		2.00	13.35
3.5 X .500		2.50	16.03
4.0 X .500		3.0	18.69


COLD FINISHED STEEL BARS
ROUNDS
AISI C 1018/1020

Stock Lengths

10 to 12 ft Randoms to 7/16" dia.

20 to 22 ft Randoms 1/2" dia. and Over

Diameter Inches	Weight lbs per ft	Diameter Inches	Weight lbs per ft
1/8	.042	1	2.67
3/16	.094	1 1/8	3.38
1/4	.167	1 1/4	4.17
5/16	.261	1 3/8	5.05
3/8	.376	1 7/16	5.52
7/16	.511	1 1/2	6.01
1/2	.668	1 3/4	8.18
9/16	.845	1 15/16	10.02
5/8	1.043	2	10.68
11/16	1.260	2 1/2	16.69
3/4	1.50	3	24.03
13/16	1.76	4	42.73
7/8	2.05	6	96.13
15/16	2.35		



**COLD FINISHED STEEL BARS
ROUNDS**

AISI C 12L14 Free Machining

Stock Lengths 10 to 12 ft Randoms

Diameter Inches	Weight lbs per ft
3/16	.094
1/4	.167
5/16	.261
3/8	.376
7/16	.511
1/2	.668
9/16	.845
5/8	1.040
3/4	1.500
7/8	2.05
15/16	2.35
1	2.67
1 1/8	3.38
1 1/4	4.17
1 1/2	6.01
1 3/4	8.18
2	10.68
3	24.03
4	42.73

**STRESSPROOF BARS****ROUNDS AISI C 1144**

Yield Strength 100,000 lbs
per sq in
Stock Lengths 20 to 22 ft
Randoms

Diameter Inches	Weight lbs per ft
3/8	.376
1/2	.668
5/8	1.040
3/4	1.50
7/8	2.04
1	2.67
1 1/4	4.17
1 3/8	5.05
1 1/2	6.01
2	10.68


STEEL DRILL RODS
HIGH CARBON ROUNDS
AISI W - 1 Water Hardening

Polished, Annealed Condition

Stock Lengths 3 ft

Diameter Inches	Weight lbs per ft
1/8	.042
5/32	.065
3/16	.094
1/4	.167
5/16	.261
3/8	.375
7/16	.511
1/2	.667
5/8	1.04
3/4	1.50
7/8	2.05
1	2.67

STEEL DRILL RODS
HIGH CARBON ROUNDS
AISI O-1 Oil Hardening

Polished, Annealed Condition

Stock Lengths 3 ft

Diameter Inches	Weight lbs per ft
1/8	.042
5/32	.065
3/16	.094
1/4	.167
5/16	.261
3/8	.375
7/16	.511
1/2	.667
5/8	1.04
3/4	1.50
7/8	2.05
1	2.67



STEEL THREADED RODS

National Course Threads

AISI C 1010

Unplated

Stock Lengths 10 ft

U.N.C. SIZE	
DESIGNATION	
Major Diameter -	Threads per Inch
1/4"	20
5/16"	18
3/8"	16
1/2"	13
5/8"	11
3/4"	10
7/8"	9
1"	8


COLD FINISHED STEEL BARS
FLATS
AISI C 1018/1020

Stock Lengths 10 to 12 ft Randoms

Size Inches	Weight lbs per ft	Size Inches	Weight lbs per ft
1/8 X 3/8	.159	3/8 X 1/2	.638
1/2	.213	3/4	.956
5/8	.266	1	1.275
3/4	.319	1 1/4	1.59
1	.425	1 1/2	1.913
1 1/4	.531	2	2.55
1 1/2	.638	3	3.825
2	.850	4	5.1
3	1.275	6	7.65
3/16 X 1/4	.159	1/2 X 5/8	1.063
1/2	.319	3/4	1.275
5/8	.398	1	1.7
3/4	.478	1 1/4	2.125
1	.638	1 1/2	2.55
1 1/4	.797	2	3.4
1 1/2	.956	2 1/2	4.25
2	1.275	3	5.1
2 1/2	1.594	4	6.8
3	1.913	6	10.2
4	2.55	5/8 X 1	2.125
1/4 X 3/8	.319	1 1/2	3.188
1/2	.425	2	4.25
5/8	.531	3	6.38
3/4	.638	3/4 X 1	2.55
1	.85	1 1/2	3.825
1 1/4	1.063	2	5.1
1 1/2	1.275	3	7.65
2	1.7	1 X 1 1/2	5.1
2 1/2	2.215	2	6.8
3	2.55	3	10.2
4	3.4	4	13.6
5	4.25	5	17.0
6	5.1	1 1/2 X 3	15.3


COLD FINISHED STEEL BARS
HEXAGONS
AISI C 12L14

Stock Lengths 10 to 12 ft Randoms

Size	Weight
Across Flats	
Inches	lbs per ft
3/16	.103
1/4	.184
5/16	.285
3/8	.414
7/16	.564
1/2	.736
9/16	.932
5/8	1.15
11/16	1.39
3/4	1.66
7/8	2.25
1	2.82
1 1/8	3.73
1 1/4	4.6
1 3/8	5.67
1 1/2	6.63

COLD FINISHED STEEL BARS**SQUARES****AISI C 1018/1020**

Stock Lengths 10 to 12 ft Randoms

Size Inches	Weight lbs per ft
3/16	.120
1/4	.213
5/16	.332
3/8	.478
7/16	.511
1/2	.85
5/8	1.33
3/4	1.91
7/8	2.6
1	3.4
1 1/8	4.3
1 1/4	5.31
1 1/2	7.65
2	13.6



HOT ROLLED STEEL SHEETS
COMMERCIAL QUALITY

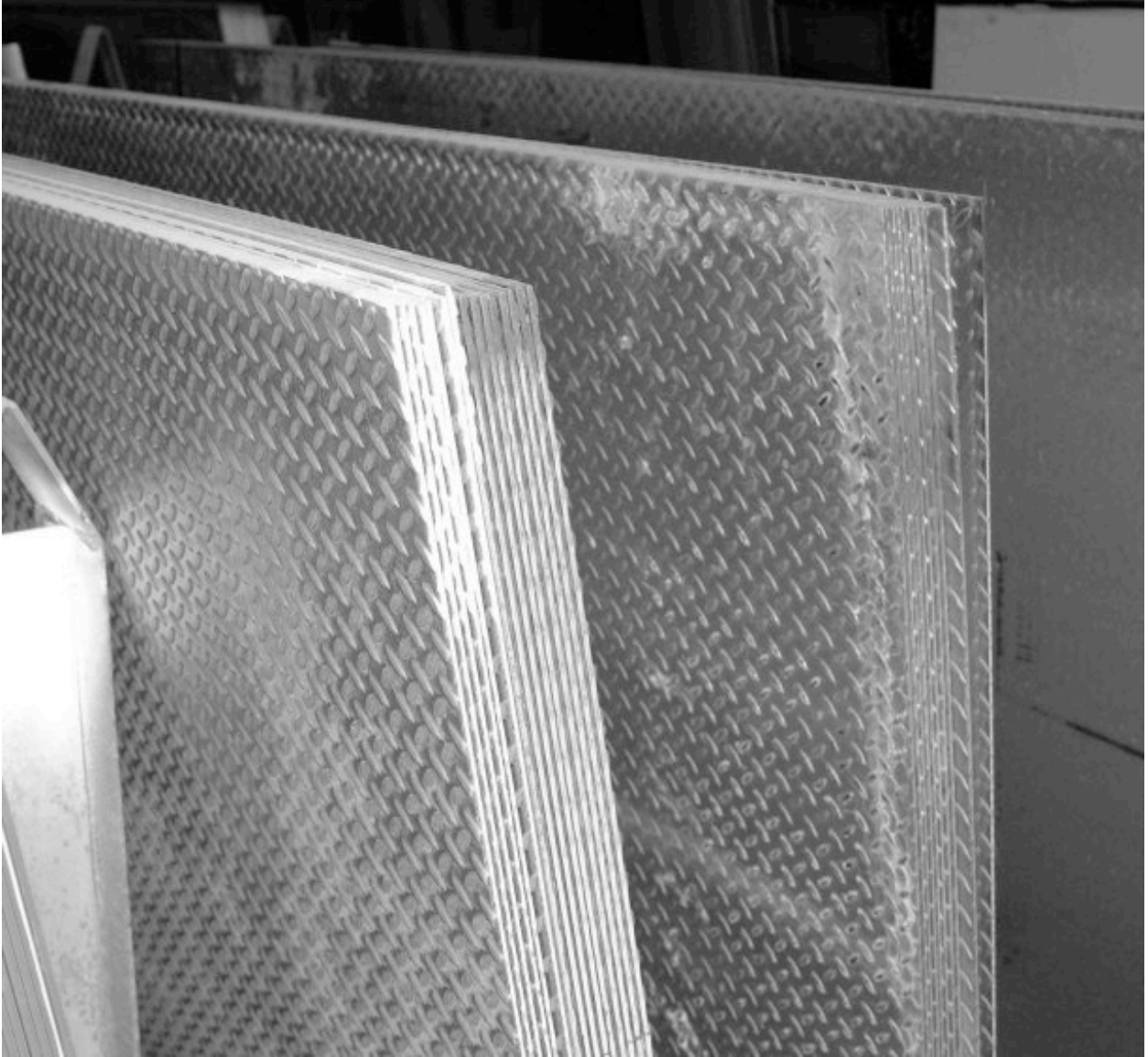
Thickness Inches	Gauge	Weight lbs per sq ft	Stock Sheet Sizes			
			4' by 8'	4' by 10'	5' by 10'	6' by 12'
.0598	16	2.5	√	√		
.0747	14	3.125	√	√	√	
.1046	12	4.375	√	√	√	√
.1196	11	5.1	√	√	√	√
.1345	10	5.625	√	√	√	√



STEEL PLATES

Commercial quality or 44W (300W)

Thickness Inches	Weight lbs per sq ft	Stock Plate Sizes				
		4' by 8'	4' by 10'	4' by 12'	5' by 10'	6' by 12'
3/16	7.66	√	√		√	√
1/4	10.21	√	√	√	√	√
5/16	12.76	√	√			
3/8	15.32	√	√		√	
1/2	20.42	√			√	
5/8	25.53	√				
3/4	30.63	√				
1	40.84	√				
1 1/4	51.0	√				
1 1/2	61.26	√				
2	81.68	√				



STEEL FLOOR PLATE
or **CHECKER PLATE**
Commercial Quality

Thickness Inches	Weight lbs per sq ft	Stock Plate Sizes		
		4' by 8'	4' by 10'	5' by 10'
14 guage (.075")	3.75	√		
1/8	6.15	√	√	√
3/16	8.7	√	√	√
1/4 (6 mm)	11.25	√	√	√
3/8	16.35	√		



Heat Treated Plates (Algoma Q & T)

Abrasion Resistant Quenched and Tempered Steel Plates

Algoma ALGOTUFF 400 commonly stocked in 4 ft by 8 ft sheets.
This material is flame-cut to the desired size.

ALGOTUFF is used for wear plates, truck and hopper liners, cutting edges, as well as other applications requiring resistance to high levels of abrasive wear.

Brinell Hardness range BHN 400/477

Typical tensile strength 200,000 PSI

Typical yield strength 190,000 PSI

Weldable

Moderately formable

**AlgoTuff 400 Quench &
Tempered Steel Plate
Abrasion-resistant**

Stock Sheets 4 ft by 8 ft

Thickness Inches	Weight lbs per sq ft
3/16	7.65
1/4	10.2
3/8	15.3
1/2	20.4
3/4	30.6
1	40.8



COLD ROLLED STEEL SHEETS

Stock Sheets 4 ft by 8 ft

Thickness Inches	Gauge	Weight lbs per sq ft
.018	26	.750
.024	24	1.00
.030	22	1.25
.036	20	1.50
.048	18	2.00
.060	16	2.50
.120	11	5.00



GALVANIZED STEEL SHEETS

Stock Sheets 4 ft by 8 ft

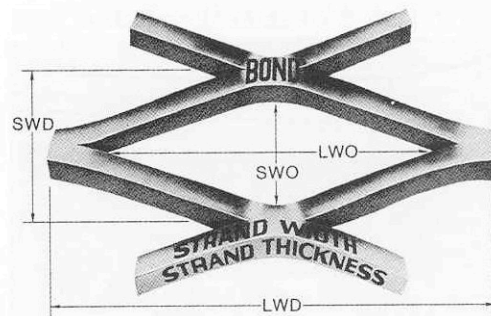
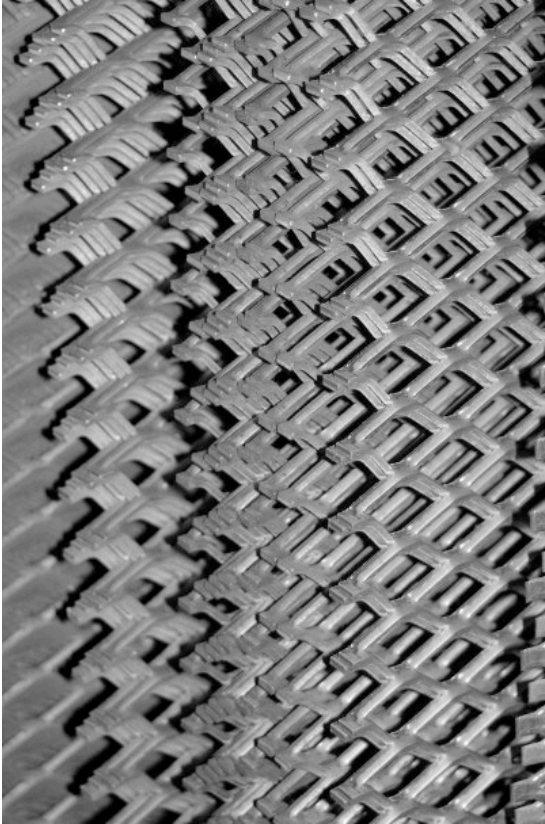
Thickness Inches	Gauge	Weight lbs per sq ft
0.0217	26	.906
0.0276	24	1.156
0.0336	22	1.406
0.0396	20	1.656
0.0516	18	2.156
0.0635	16	2.656
0.123	11	5.15



**SATIN COAT STEEL SHEETS
or GALVANNEAL STEEL SHEETS**

Stock Sheets 4 ft by 8 ft

Thickness Inches	Gauge	Weight lbs per sq ft
0.0276	24	1.156
0.0336	22	1.406
0.0396	20	1.656
0.0516	18	2.156
0.0635	16	2.656

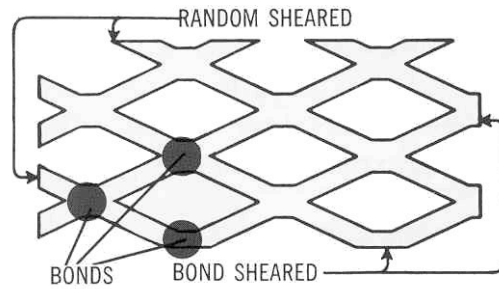
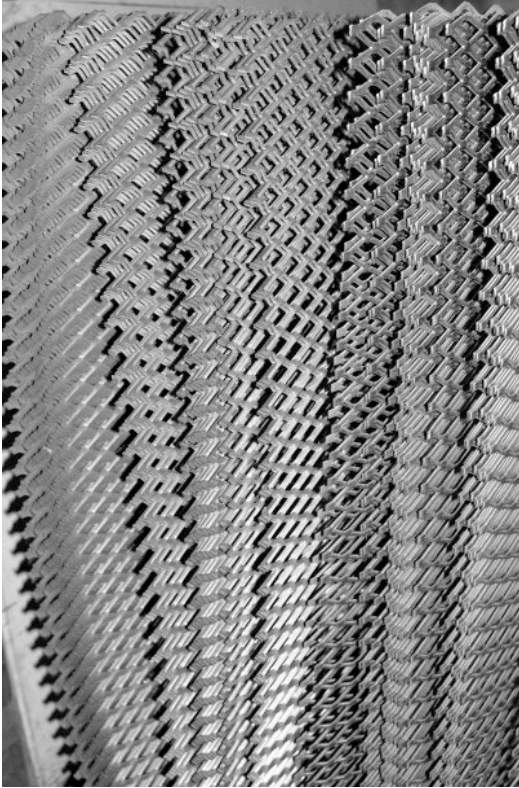

REGULAR EXPANDED METAL
Carbon Steel

Stock Sheets 4 ft by 8 ft

STYLE	WEIGHT lbs per 100 sq. ft.	SIZE OF OPENING Inches		CENTRE TO CENTRE OF BOND Inches		SIZE OF STRANDS Inches		OVERALL THICKNESS Inches	PERCENT OPEN AREA
		SWD	LWD	SWD	LWD	WIDTH	THICKNESS		
5/16" - # 18	104	.188	.688	.333	1.00	.094	.048	.170	48
1/2" - # 16	86	.375	.938	.500	1.20	.087	.060	.175	65
3/4" - # 9 (10 ga.)	180	.688	1.562	.923	2.00	.150	.135	.312	68
1" - # 14	78	.875	1.563	1.00	2.25	.125	.074	.225	75
1" - # 10	170	.750	1.563	1.00	2.25	.155	.135	.375	62
1 1/2" - # 10 H	200	.830	2.375	1.33	3.00	.240	.135	.460	72

SWD Denotes Short Way Diamond

LWD Denotes Long Way Diamond

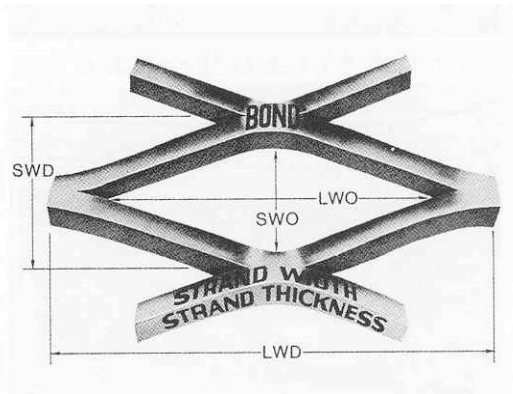
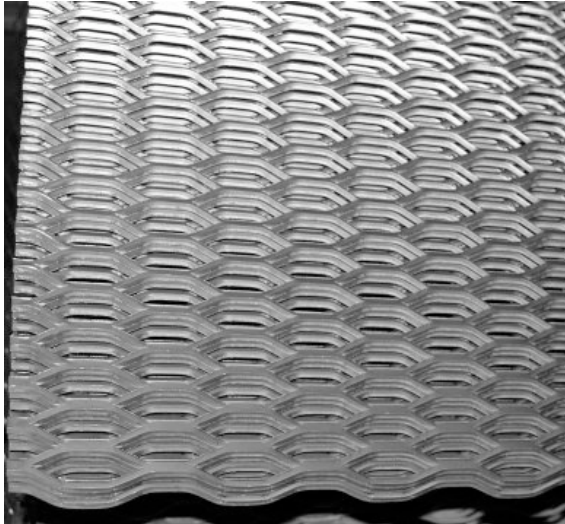

FLATTENED EXPANDED METAL
Carbon Steel

Stock Sheets 4 ft by 8 ft

STYLE	WEIGHT lbs per 100 sq. ft.	SIZE OF OPENING Inches		CENTRE TO CENTRE OF BOND Inches		SIZE OF STRANDS Inches		OVERALL THICKNESS Inches	PERCENT OPEN AREA
		SWD	LWD	SWD	LWD	WIDTH	THICKNESS		
3/16" - # 20 F	86	.094	.343	.218	.500	.063	.032	.032	43
1/4" - # 20 F	88	.084	.715	.250	1.05	.079	.030	.030	35
1/2" - # 16 F	82	.312	1.00	.500	1.25	.096	.039	.039	63
1/2" - # 13 F	140	.312	1.00	.500	1.25	.107	.070	.070	52
1" - # 14 F	63	.813	2.00	1.00	2.30	.125	.070	.070	80
1" - # 10 F	165	.750	1.90	1.00	2.30	.160	.110	.110	58

SWD Denotes Short Way Diamond

LWD Denotes Long Way Diamond


STRUCTURAL GRATING

Stock Sheets 8 ft by 4 ft

STYLE	WEIGHT lbs per sq. ft.	SIZE OF OPENING		CENTRE TO CENTRE OF BOND		SIZE OF STRANDS		OVERALL THICKNESS Inches	PERCENT OPEN AREA
		Inches		Inches		Inches			
		SWD	LWD	SWD	LWD	WIDTH	THICKNESS		
3 lb	3	0.94	3.44	1.33	5.33	0.264	0.183	0.54	60
4 lb	4	0.94	3.44	1.33	5.33	0.3	0.215	0.618	55
5 lb	5	0.813	3.38	1.33	5.33	0.331	0.25	0.655	50

SWD Denotes Short Way Diamond

LWD Denotes Long Way Diamond

STRUCTURAL GRATING

Concentrated and Uniform Load Deflection /

Fixed Span

STYLE lbs per sq ft		SPAN		
		24"	36"	48"
3 lb	U	275	100	
	D	0.25	0.22	
	C	275	165	75
4 lb	D	0.25	0.25	0.25
	U	350	150	50
	D	0.24	0.245	0.25
5 lb	C	440	220	100
	D	0.25	0.25	0.25
	U	600	175	100
5 lb	D	0.24	0.24	0.25
	C	540	310	140
	D	0.245	0.25	0.25

U = Uniform Load in lbs per sq ft

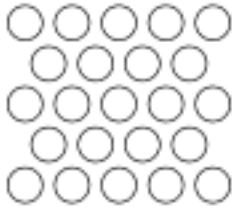
C = Concentrated Load in lbs per lineal ft

D = Deflection in inches

STRUCTURAL GRATING

Selection Chart

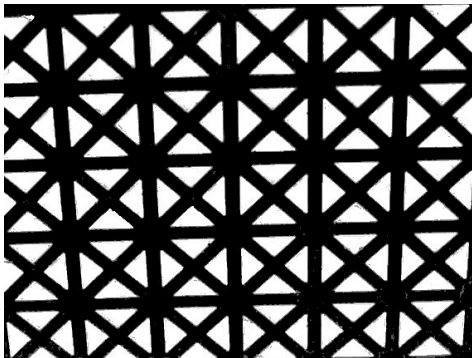
CONCENTRATED LOAD lbs per ft of length of catwalk or platform	CLEAR SPAN Style				
	23"	30"	35"	42"	47"
50 lbs Light or Occasional Pedestrian Traffic	3 lb	3 lb	3 lb	3 lb	3 lb
100 lbs Normal or Frequent Pedestrian Traffic	3 lb	3 lb	3 lb	4 lb	5 lb
150 lbs Heavy or Constant Pedestrian Traffic	3 lb	4 lb	4 lb	5 lb	
200 lbs Pedestrian Traffic with Light Equipment	3 lb	4 lb	5 lb		
250 lbs Pedestrian Traffic with Light Equipment	4 lb	5 lb	5 lb		


Cold Rolled Perforated Steel Sheets

Stock Sheets 4 ft by 8 ft

Round holes, staggered pattern

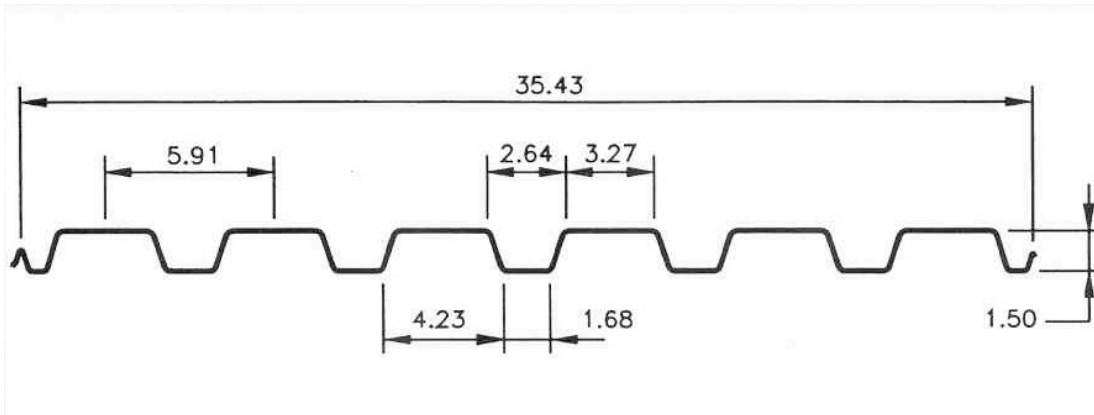
Thickness	Hole Diameter	Spacing centre to centre	% Open Area
.120	1/8	3/16	41
.060	1/8	3/16	41
.060	3/16	1/4	51
.060	1/4	3/8	63
.060	1/2	11/16	48


Cold Rolled Perforated Steel Sheets

Stock Sheets 2 ft by 3 ft

Decorative Pattern

Thickness	Design	% Open Area
.024	Grecian	35



STEEL ROOF DECK

Type RD

938

Stock Panels 3 ft x 24 ft

Nominal Thickness .030 inches

Galvanized Coating to spec. Z 275

Loading Table - Uniformly Distributed

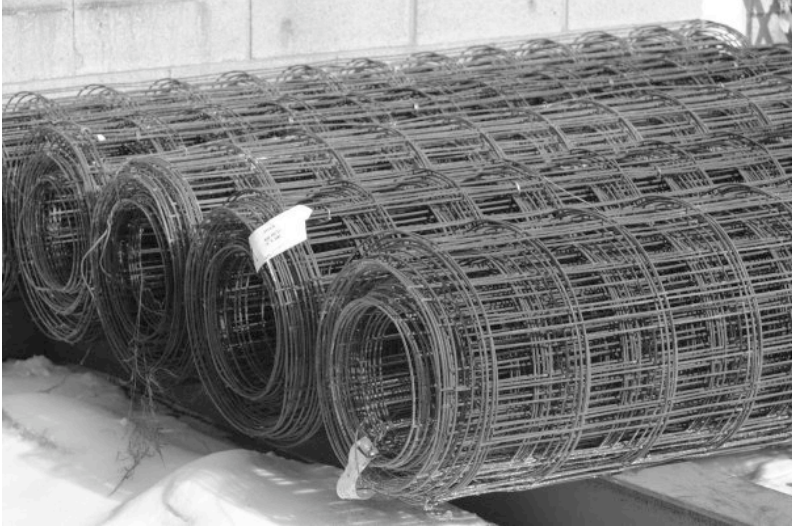
Load in Pounds per Square Foot

Support Spacing inches	Piece Supported Over	1-Span	2-Spans	3-Spans
48	B	154	165	190
	D	151	f	f
54	B	121	131	163
	D	106	f	f
60	B	98	106	132
	D	77	f	f
66	B	81	88	109
	D	58	f	f
72	B	68	74	92
	D	45	f	84
78	B	58	63	78
	D	35	f	66
84	B	50	54	68
	D	28	f	53
90	B			59
	D			43
96	B			52
	D			36

B - Denotes total loading for allowable working stress.

D - Denotes total loading for allowable deflection of 1/240th span.

f - indicates the load for stress to govern.

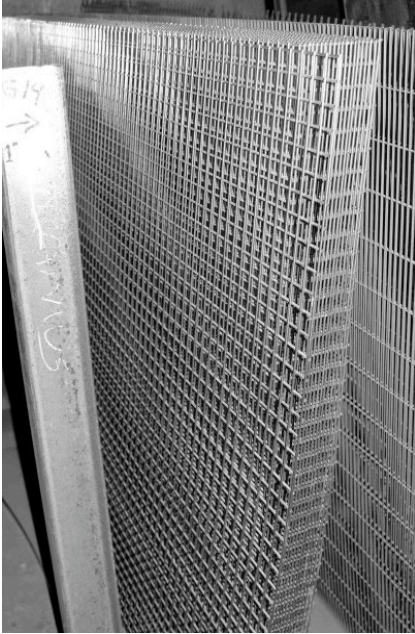


WELDED WIRE CONSTRUCTION FABRIC

ASTMA185

CSA G30.5

STYLE	Stock Size		
	4' by 8' Sheets	6' by 200' Rolls	6' by 100' Rolls
6 X 6 X 10/10		√	√
6 X 6 X 9/9	√		



**ARCHITECTURAL
WELDED WIRE MESH**

Stock Sheets 4 ft by 8 ft

STYLE
Inches
1 X 1 X 1/8
2 X 2 X 1/8

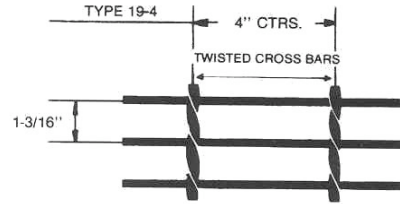
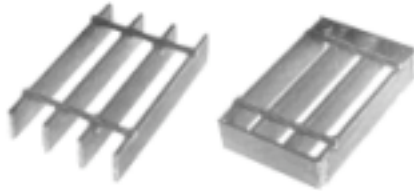


Ladder Rung

13 ga. HRPO Steel

Stock Lengths - 5 ft

Width inches	Height inches	Weight lbs per ft
1 5/8	1 1/8	1.3
2 1/4	1 1/2	1.5


WELDED BAR GRATING
Standard Flowforge Type 19-4 (meets N.A.A.M.M. standards)

Bearing Bars 1-3/16" Centres

Stock Mats 3 ft nominal by 24 ft

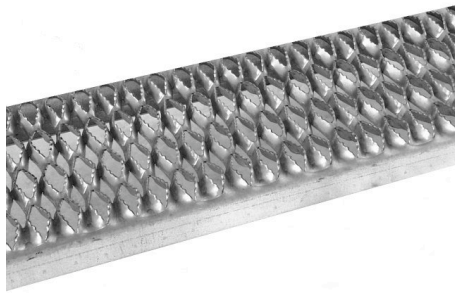
BEARING BAR SIZE inches	WEIGHT (APPROX) lbs per sq ft	SPAN													
		2'-0"	2'-6"	3'-0"	3'-6"	4'-0"	4'-6"	5'-0"	5'-6"	6'-0"	6'-6"	7'-0"	8'-0"	9'-0"	
3/4 X 1/8	3.93	U	386	247	172	126	96	76							
		D	.095	.151	.216	.295	.374	.486							
		C	386	308	258	220	194	171							
		D	.076	.119	.173	.234	.308	.389							
3/4 X 3/16	5.58	U	578	370	258	188	144	115							
		D	.095	.151	.216	.295	.374	.486							
		C	578	462	386	331	289	257							
		D	.076	.119	.173	.234	.308	.389							
1 X 1/8	5.03	U	686	439	304	224	171	135	109	91	76				
		D	.072	.111	.159	.219	.288	.366	.451	.547	.673				
		C	686	549	457	392	343	305	275	250	228				
		D	.057	.090	.129	.176	.231	.293	.360	.434	.518				
1 X 3/16	7.23	U	1029	659	459	338	257	203	164	135	114				
		D	.072	.111	.159	.219	.288	.366	.451	.547	.673				
		C	1029	824	686	587	514	458	412	375	343				
		D	.057	.090	.129	.176	.231	.293	.360	.434	.518				
1 1/4 X 1/8	6.12	U	1072	686	476	350	268	212	172	142	119	101	87		
		D	.057	.090	.129	.176	.231	.291	.358	.433	.520	.608	.704		
		C	1072	858	716	613	536	477	430	390	358	330	306		
		D	.046	.072	.104	.141	.183	.233	.288	.349	.416	.487	.565		
1 1/4 X 3/16	8.87	U	1608	1028	716	526	403	318	258	213	179	152	131		
		D	.057	.090	.129	.176	.231	.291	.358	.433	.520	.608	.704		
		C	1608	1285	1073	918	803	716	644	585	536	495	459		
		D	.046	.072	.104	.141	.183	.233	.288	.349	.416	.487	.565		
1 1/2 X 1/8	7.23	U	1544	987	686	505	387	306	248	205	172	149	128	96	75
		D	.047	.075	.106	.147	.192	.243	.300	.365	.433	.506	.587	.774	.978
		C	1544	1235	1029	883	772	687	619	563	515	475	441	386	342
		D	.038	.059	.087	.117	.154	.195	.241	.289	.347	.406	.470	.614	.777
1 1/2 X 3/16	10.51	U	2321	1485	1031	758	581	458	371	307	260	222	191	145	115
		D	.047	.075	.106	.147	.192	.243	.300	.365	.433	.506	.587	.774	.978
		C	2321	1856	1547	1325	1159	1031	928	844	773	714	663	581	515
		D	.038	.059	.087	.117	.154	.195	.241	.289	.347	.406	.470	.614	.777

U = Uniform Load in lbs per sq ft

C = Concentrated Load in lbs per ft of grating length

D = Deflection in inches

Note: Spans and loads to the right of the heavy line exceed a deflection of 1/4" for uniform loads of 100 lbs per sq ft.


DECK SPAN

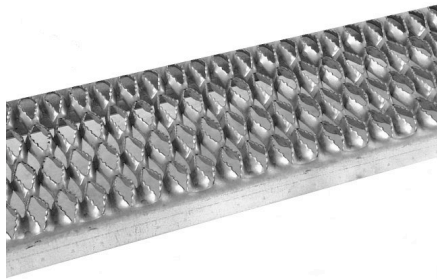
Stock Lengths 12 ft

WIDTH inches	DEPTH inches	THICK- NESS Gauge	WEIGHT lbs per lin ft	TABLE OF ALLOWABLE LOADS (lbs)													
				SINGLE SPAN CONDITION													
				2'-0"	2'-6"	3'-0"	3'-6"	4'-0"	4'-6"	5'-0"	5'-6"	6'-0"	7'-0"	8'-0"	9'-0"	10'-0"	
4 3/4	1 1/2	14	2.3	U			591	435	334	265	215	179	151				
				D	.06	.10	.14	.20	.26	.32	.40	.49	.58				
				C	524	420	351	301	265	236	213	195	179				
		D	.05	.08	.11	.16	.20	.26	.32	.39	.47						
		12	3.2	U			782	576	443	351	286	237	200	149	116		
				D	.07	.11	.15	.21	.27	.35	.43	.52	.62	.86	1.14		
	C			693	556	464	399	350	313	283	258	238	206	183			
	D	.05	.08	.12	.17	.22	.28	.34	.42	.50	.69	.91					
	2	14	2.6	U				721	553	438	356	295	248	184	142	113	93
				D	.06	.09	.13	.17	.23	.29	.35	.43	.51	.70	.92	1.18	1.47
				C		697	582	499	438	390	352	321	295	255	225	201	183
		D	.04	.07	.10	.14	.18	.23	.28	.34	.41	.56	.74	.94	1.18		
12		3.6	U					703	557	453	375	317	235	181	145	119	
			D	.05	.08	.11	.16	.20	.26	.32	.39	.46	.64	.84	1.07	1.34	
	C				739	635	557	496	448	409	376	325	287	258	235		
D	.04	.06	.09	.12	.16	.21	.26	.31	.37	.51	.67	.86	1.07				
7	1 1/2	14	3.0	U			577	402	269	227	180	147	122	103			
				D	.06	.10	.14	.20	.26	.33	.40	.49	.59				
				C	524	421	351	302	265	237	214	196	180				
		D	.05	.08	.11	.16	.21	.26	.32	.39	.47						
		12	4.1	U			763	532	392	301	239	195	162	137	102	79	
				D	.07	.11	.15	.21	.27	.35	.43	.52	.63	.87	1.15		
	C			694	556	465	400	352	314	284	260	240	208	185			
	D	.05	.08	.12	.17	.22	.28	.34	.42	.50	.69	.92					
	2	14	3.2	U			665	490	376	298	242	201	169	125	97	77	63
				D	.06	.09	.13	.17	.23	.29	.35	.43	.51	.71	.93	1.19	1.49
				C		697	582	500	439	391	353	322	296	256	226	203	185
		D	.04	.07	.10	.14	.18	.23	.28	.34	.41	.56	.74	.95	1.19		
12		4.5	U				623	478	379	308	256	216	160	124	99	82	
			D	.05	.08	.11	.16	.20	.26	.32	.39	.47	.64	.85	1.08	1.36	
	C				740	636	558	498	450	410	378	327	289	260	238		
D	.04	.06	.09	.12	.16	.21	.26	.31	.37	.51	.68	.87	1.09				

U = Uniform Load (lbs per ft)

C = Concentrated Load (lbs per ft)

D = Deflection (inches)


DECK SPAN

Stock Lengths 12 ft

WIDTH inches	DEPTH inches	THICK- NESS Gauge	WEIGHT lbs per lin ft	TABLE OF ALLOWABLE LOADS (lbs)													
				SINGLE SPAN CONDITION													
				2'-0"	2'-6"	3'-0"	3'-6"	4'-0"	4'-6"	5'-0"	5'-6"	6'-0"	7'-0"	8'-0"	9'-0"	10'-0"	
9 1/2	1 1/2	14	3.6	U	663	426	296	219	168	134	109	90	77				
				D	.06	.10	.14	.20	.26	.33	.41	.50	.59				
				C	525	421	352	303	266	238	215	197	182				
		D	.05	.08	.11	.16	.21	.26	.33	.40	.47						
		12	5.0	U		581	405	298	229	182	148	123	104	77	60		
				D	.07	.11	.16	.21	.28	.36	.44	.54	.64	.89	1.17		
	C			718	575	481	413	363	324	292	267	246	213	189			
	D	.06	.09	.13	.17	.23	.29	.35	.43	.52	.71	.94					
	2	14	3.8	U		705	491	362	278	220	179	148	125	93	72	58	47
				D	.06	.09	.13	.17	.23	.29	.36	.43	.52	.71	.94	1.20	1.51
				C	730	698	583	501	440	392	354	323	298	258	228	205	187
		D	.04	.07	.10	.14	.18	.23	.28	.35	.41	.57	.75	.96	1.20		
12		5.4	U			624	460	353	280	228	189	160	119	92	74	61	
			D	.05	.08	.11	.16	.20	.26	.32	.39	.47	.65	.85	1.10	1.38	
	C				741	637	559	499	451	412	380	329	292	264	241		
D	.04	.06	.09	.12	.16	.21	.26	.31	.37	.52	.68	.88	1.10				
11 3/4	1 1/2	14	4.2	U	536	344	240	177	136	108	88	74	62				
				D	.06	.10	.14	.20	.26	.33	.41	.50	.60				
				C	525	402	353	304	267	239	216	198	183				
		D	.05	.08	.12	.16	.21	.26	.33	.40	.48						
		12	5.9	U	710	456	318	235	181	144	117	98	83	62	49		
				D	.07	.11	.15	.21	.28	.35	.44	.53	.64	.89	1.18		
	C			695	558	467	402	354	317	287	263	244	213	190			
	D	.05	.08	.12	.17	.22	.28	.35	.43	.51	.71	.95					
	2	14	4.4	U		571	397	293	225	178	145	120	102	76	59	47	
				D	.06	.09	.13	.17	.23	.29	.36	.43	.52	.71	.95	1.21	
				C	707	699	584	502	440	393	355	324	299	259	230	207	
		D	.04	.07	.10	.14	.18	.23	.29	.35	.42	.57	.76	.97			
12		6.4	U		725	505	372	286	227	185	154	130	97	75	60	50	
			D	.05	.08	.11	.16	.20	.26	.32	.39	.47	.65	.86	1.11	1.39	
	C				742	638	561	501	453	414	382	332	295	266	243		
D	.04	.06	.09	.12	.16	.21	.26	.31	.38	.52	.69	.89	1.11				

U = Uniform Load (lbs per ft)

C = Concentrated Load (lbs per ft)

D = Deflection (inches)



ALUMINUM ANGLES

6063-T5
ARCHITECTURAL
 Square Corners
 Stock Lengths 21 ft

Size Inches	Weight lbs per ft
1/2 X 1/2 X 1/16	.070
X 1/8	.128
3/4 X 3/4 X 1/8	.211
1 X 1 X 1/8	.280
1 1/4 X 1 1/4 X 1/8	.356
1 1/2 X 1 1/2 X 1/8	.432
2 X 2 X 1/8	.563
X 3/16	.832
X 1/4	1.125



**ALUMINUM ANGLES
6061-T6 STRUCTURAL**

Round Fillets

Stock Lengths 20 ft

Size Inches	Weight lbs per ft
1 X 1 X 1/8	0.279
X 1/4	0.53
1 1/4 X 1 1/4 X 1/8	0.343
X 3/16	0.509
1 1/2 X 1 1/2 X 1/8	0.432
X 3/16	0.634
X 1/4	0.811
2 X 2 X 1/8	0.572
X 3/16	0.845
X 1/4	1.125
3 X 3 X 1/4	1.712
3 X 2 X 3/16	1.071
4 X 4 X 1/4	2.375


ALUMINUM FLAT BARS
6061-T6

Stock Lengths 20 ft

Size Inches	Weight lbs per ft	Size Inches	Weight lbs per ft
1/8 X 1/2	.0735	3/8 X 1	0.441
3/4	.11	1 1/2	0.661
1	.147	2	0.882
1 1/2	.22	2 1/2	1.102
2	.294	3	1.322
3	.441	1/2 X 1	0.587
3/16 X 3/4	.165	1 1/2	0.881
1	.22	2	1.175
1 1/4	.275	2 1/2	1.469
1 1/2	.331	3	1.762
2	.441	4	2.352
1/4 X 1/2	.147	6	3.64
3/4	.221	3/4 X 2	1.762
1	.294	3	2.643
1 1/4	.367	4	3.524
1 1/2	.441	6	5.287
2	.587	1 X 1 1/2	1.764
2 1/2	.734	2	2.35
3	.882	3	3.64
4	1.176	4	4.7
5	1.47		
6	1.764		



ALUMINUM ROUND BAR

6061-T6

Stock Lengths 12 or 20 ft

Diameter Inches	Weight lbs per ft
1/4	.059
5/16	.090
3/8	.130
1/2	.230
5/8	.360
3/4	.530
7/8	.706
1	.922
1 1/4	1.743
1 3/8	1.7445
1 1/2	2.074
1 3/4	2.823
2	3.687
2 1/2	5.88
3	8.296
3 1/2	11.30
4	14.75


ALUMINUM CHANNELS

6063-T5
ARCHITECTURAL
 Square Fillets
 Stock Lengths 21 ft

Size Inches	Weight lbs per ft
1 X 1/2 X 1/8	.263
1 X 3/4 X 1/8	.337
1 1/2 X 3/4 X 1/8	.41
1 1/2 X 1 1/2 X 1/8	.625
2 X 1 X 1/8	.550

ALUMINUM CHANNELS

6061-T6 Structural
 Round Fillets
 Stock Lengths 20 ft

Size Inches	Weight lbs per ft
3 X 1 1/2 X 3/16	1.48
3 X 2 X 1/4	2.18



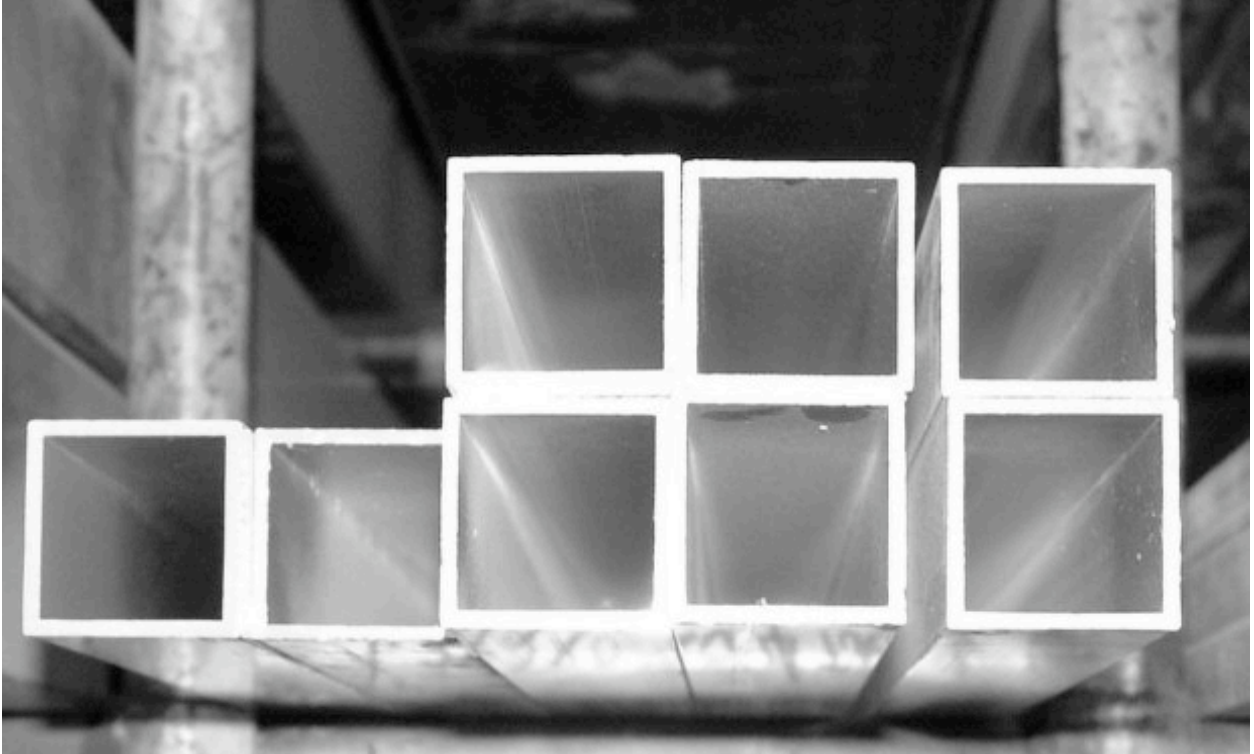
ALUMINUM PIPE SIZES
SCHEDULE 40 (STANDARD WALL)
Extruded 6061-T6
 Stock Lengths 20 ft

Nominal Size Inches	Outside Diameter Inches	Wall Thickness Inches	Inside Diameter Inches	Weight lbs per ft
1/2	.840	.109	.622	.293
3/4	1.050	.113	.824	.391
1	1.315	.133	1.049	.581
1 1/4	1.660	.140	1.380	.786
1 1/2	1.900	.145	1.610	.940
2	2.375	.154	2.067	1.264
2 1/2	2.875	.203	2.469	2.004

ALUMINUM ROUND TUBE

6061-T6 Extruded
 Stock Lengths 20 ft

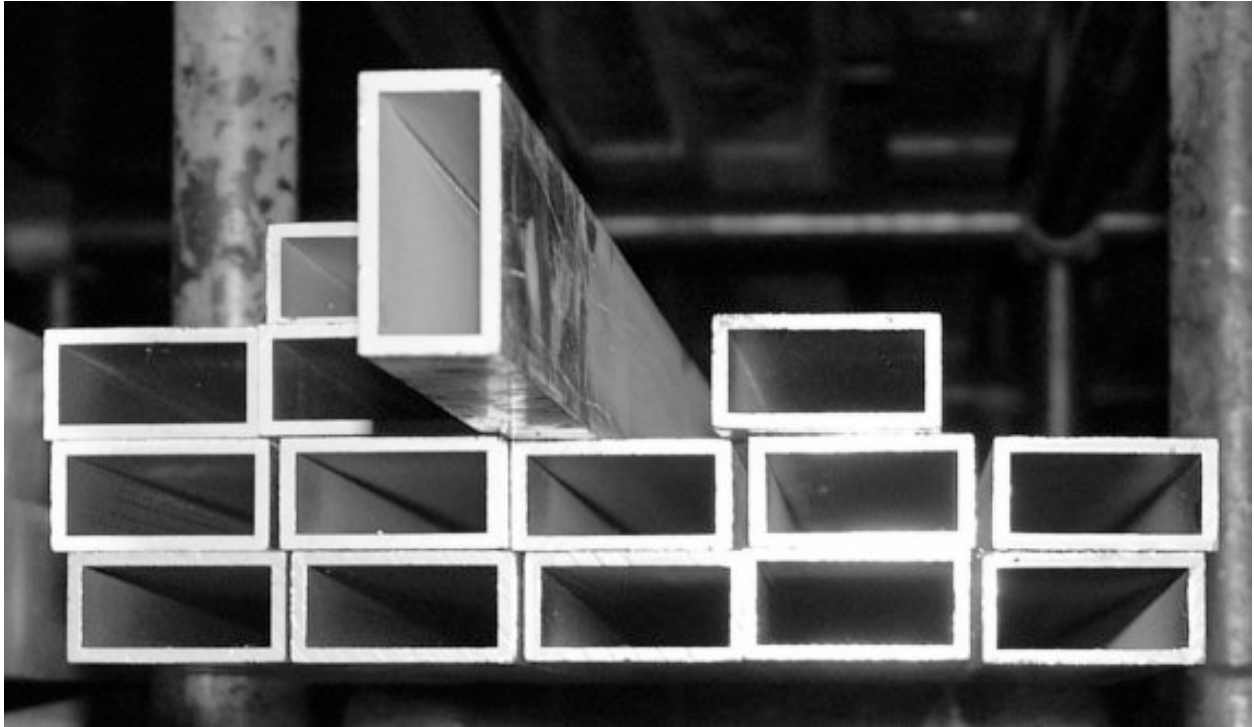
Size Inches	Weight lbs per ft
1/2 O.D. X .065	.106
3/4 O.D. X .065	.164
1 O.D. X .065	.224



ALUMINUM SQUARE TUBE

6063-T5
ARCHITECTURAL
 Square Corners
 Stock Lengths 21 ft

Size Inches	Weight lbs per ft
1/2 X 1/2 X .065	.133
3/4 X 3/4 X .065	.218
1 X 1 X .095	.413
1 1/4 X 1 1/4 X .120	.664
1 1/2 X 1 1/2 X .095	.640
X .120	.750
2 X 2 X .120	1.07



**ALUMINUM
RECTANGULAR TUBE
6063-T5 ARCHITECTURAL**

Square Corners

Stock Lengths 21 ft

Size Inches	Weight lbs per ft
2 X 1 X .095	.650
2 X 1 X .120	.805
3 X 2 X .120	1.370
4 X 2 X .188	2.440



ALUMINUM SQUARE TUBE

6061-T6 STRUCTURAL

Round Corners

Stock Lengths 20 ft

Size Inches	Weight lbs per ft
1 X 1 X .120	.474
1 1/4 X 1 1/4 X .120	.664
1 1/2 X 1 1/2 X .120	.75
2 X 2 X .120	.983
X .188	1.502
X .250	1.87
3 X 3 X .250	3.219



**ALUMINUM SHEET
UTILITY GRADE (3003-H14)**

Mill Finish

Stock Sheets 4 ft by 8 ft

Thickness Inches	Gauge	Weight lbs per sq ft
.032	20	.451
.040	18	.563
.050	16	.718
.063	14	.901
.080	12	1.14
.090	11	1.282

ALUMINUM SHEET

6061-T6

Mill Finish

Stock Sheets 4 ft by 12 ft

Thickness Inches	Gauge	Weight lbs per sq ft
.050	16	.718
.063	14	.901
.080	12	1.14
.090	11	1.282



**ALUMINUM PLATE
UTILITY GRADE (3003-H14)**

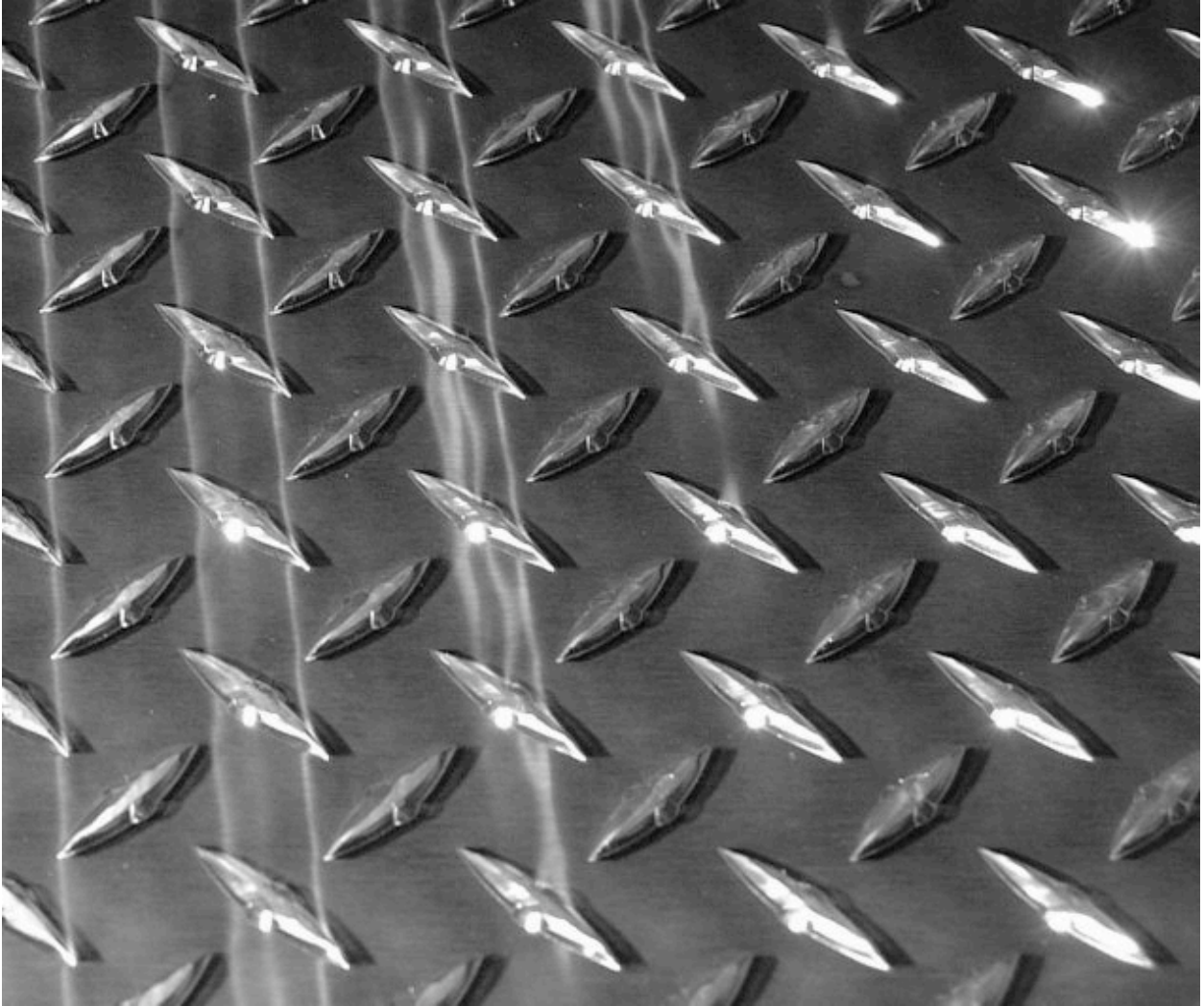
Mill Finish
Stock Sheets 4 ft by 8 ft

Thickness Inches	Weight lbs per sq ft
1/8	1.762
3/16	2.641
1/4	3.521
3/8	5.291
1/2	7.042

**ALUMINUM PLATE
6061-T6 Structural Grade**

Mill Finish
Stock Sheets 4 ft by 12 ft

Thickness Inches	Weight lbs per sq ft
1/8	1.762
3/16	2.641
1/4	3.521
3/8	5.291
1/2	7.042



ALUMINUM CHECKER PLATE

Stock Sheets 4 ft by 8 ft

Thickness	Weight
Inches	lbs per sq ft
1/8	1.9
3/16	2.8
1/4	3.7



STAINLESS STEEL ANGLES

AISI TYPE 304

Mill Finish

Stock Length 20 ft

Size Inches	Weight lbs per ft
1 X 1 X 1/8	.8
3/16	1.16
1 1/2 X 1 1/2 X 1/8	1.23
1/4	2.34
2 X 2 X 1/8	1.65
3/16	2.44
1/4	3.19


STAINLESS STEEL BARS
FLATS
AISI TYPE 304

Stock Lengths 12 to 14 ft

Size Inches	Weight lbs per ft
1/8 X 1/2	.212
3/4	.319
1	.425
1 1/4	.531
1 1/2	.638
2	.850
3/16 X 1	.638
1 1/4	.797
1 1/2	.959
2	1.275
1/4 X 1/2	.425
1	.85
1 1/2	1.275
2	1.7
3	2.55


STAINLESS STEEL BARS
ROUNDS
AISI TYPE 303 Free-machining

Stock Lengths 12 to 14 ft

Diameter Inches	Weight lbs per ft
1/4	0.167
5/16	0.261
3/8	0.376
7/16	0.511
1/2	0.668
5/8	1.043
3/4	1.502
1	2.67
1-1/2	6.008

STAINLESS STEEL BARS
ROUNDS
AISI TYPE 304

Stock Lengths 12 to 14 ft

Diameter Inches	Weight lbs per ft
1/8	0.042
3/16	0.094
1/4	0.167
5/16	0.261
3/8	0.376
7/16	0.511
1/2	0.668
5/8	1.043
3/4	1.502
1	2.67



**STAINLESS STEEL BARS
SQUARES
AISI TYPE 304**

Stock Lengths 12 to 14 ft

Size Inches	Weight lbs per ft
3/8	.478
1/2	.850
5/8	1.238
3/4	1.913
1	3.4


STAINLESS STEEL ROUND TUBE
AISI TYPE 304

Mill Finish

Stock Lengths 20 ft

Outside Diameter inches	Wall Thickness inches	Inside Diameter inches	Weight lbs per ft
1/4 X .035		.180	
3/8 X .035		.305	
1/2 X .065		.37	.302
3/4 X .065		.62	.4755
1 X .065		.87	.6491
	.120	.76	1.128
	2 X .120	1.75	2.503

STAINLESS STEEL PIPE SIZES
SCHEDULE 40 (STANDARD WALL)

Type 304

Mill Finish

Stock Lengths 20 ft

Nominal Size Inches	Outside Diameter Inches	Wall Thickness Inches	Inside Diameter Inches	Weight lbs per ft
1/2	.840	.109	.622	0.851
3/4	1.050	.113	.824	1.131
1	1.315	.133	1.049	1.679
1 1/4	1.660	.140	1.380	2.273
1 1/2	1.900	.145	1.610	2.718
2	2.375	.154	2.067	3.653



STAINLESS STEEL SQUARE TUBE

AISI TYPE 304

Mill Finish

Stock Lengths 20 ft

Size Inches	Weight lbs per ft
3/4 X 3/4 X .065	.605
1 X 1 X .065	.826
.120	1.436
1 1/4 X 1 1/4 X .065	1.048
1 1/2 X 1 1/2 X .120	2.062

STAINLESS STEEL SHEET
AISI TYPE 304

Finish # 2B (mill finish)

Stock Sheets 4 ft by 8 ft

Thickness Inches	Gauge	Weight lbs per sq ft
.048	18	2.04
.060	16	2.625
.075	14	3.28
.105	12	4.593
.120	11	5.25
.135	10	5.73

STAINLESS STEEL SHEET
AISI TYPE 304

Finish # 4 one side (180 grit) PVC cover

Stock Sheets 4 ft by 8 ft

Thickness Inches	Gauge	Weight lbs per sq ft
.048	18	2.04
.060	16	2.625
.075	14	3.28
.105	12	4.593
.120	11	5.25
.135	10	5.73

STAINLESS STEEL
PLATE
AISI TYPE 304

Mill Finish

Stock Sheets 4 ft by 8 ft

Thickness Inches	Weight lbs per sq ft
3/16	8.579
1/4	11.162
3/8	16.496



BRASS BARS

ROUNDS

ASTM B16-360

Stock Lengths 10 to 12 ft

Diameter Inches	Weight lbs per ft
1/4	.199
3/8	.449
7/16	.611
1/2	.798
5/8	1.246
3/4	1.795
1	3.19
1 1/2	7.18



BRASS BARS

FLATS

ASTM B16-360

Stock Lengths 10 to 12 ft

Size Inches	Weight lbs per ft
1/8 X 1/4	.115
1/8 X 1/2	.23
1/8 X 1	.460
1/8 X 1 1/2	.724
1/4 X 1/2	.461
1/4 X 1	.921



BRASS BARS

SQUARES

ASTM B16-360

Stock Lengths 10 to 12 ft

Size Inches	Weight lbs per ft
3/16	0.13
1/4	0.23
5/16	.36
3/8	.518
7/16	.705
1/2	.921
9/16	1.17
5/8	1.44
3/4	2.07
1	3.68
1 1/4	5.76
1 1/2	8.29



BRASS BARS

HEXAGONS

ASTM B16-360

Stock Lengths 10 to 12 ft

Size Across Flats Inches	Weight lbs per ft
1/4	.199
3/8	.449
7/16	.611
1/2	.798
5/8	1.246
3/4	1.795
1	3.19
1 1/2	7.18



BEARING BRONZE

CAST ROUNDS

SAE 660

ASTM B-505-C93200

Stock Length 9 ft Random

Diameter Inches	Weight lbs per ft
1/2	.924
1	3.312
2	12.9

DECIMAL EQUIVALENTS

FRACTION	DECIMAL	mm	FRACTION	DECIMAL	mm	FRACTION	DECIMAL	mm	FRACTION	DECIMAL	mm
Inch	Inch		Inch	Inch		Inch	Inch		Inch	Inch	
1/64	.0156	.3962	17/64	.2656	6.7462	33/64	.5156	13.0962	49/64	.7656	19.4462
1/32	.0312	.7925	9/32	.2812	7.1425	17/32	.5312	13.4925	25/32	.7812	19.8425
3/64	.0469	1.1913	19/64	.2969	7.5412	35/64	.5469	13.8912	51/64	.7969	20.2413
1/16	.0625	1.5875	5/16	.3125	7.9375	9/16	.5625	14.2875	13/16	.8125	20.6375
5/64	.0781	1.9844	21/64	.3281	8.3337	37/64	.5781	14.6837	53/64	.8281	21.0337
3/32	.0937	2.3799	11/32	.3437	8.7299	19/32	.5937	15.0799	27/32	.8437	21.4299
7/64	.1093	2.7762	23/64	.3594	9.1287	39/64	.6094	15.4787	55/64	.8594	21.8287
1/8	.1250	3.1750	3/8	.3750	9.5250	5/8	.6250	15.8750	7/8	.8750	22.2250
9/64	.1406	3.5712	25/64	.3906	9.9212	41/64	.6406	16.2712	57/64	.8906	22.6212
5/32	.1562	3.9675	13/32	.4062	10.3174	21/32	.6562	16.6675	29/32	.9062	23.0175
11/64	.1719	4.3663	27/64	.4219	10.7167	43/64	.6719	17.0662	59/64	.9219	23.4162
3/16	.1875	4.7625	7/16	.4375	11.1125	11/16	.6875	17.4625	15/16	.9375	23.8125
13/64	.2031	5.1587	29/64	.4531	11.5087	45/64	.7031	17.8587	61/64	.9531	24.2087
7/32	.2187	5.5549	15/32	.4687	11.9049	23/32	.7187	18.2549	31/32	.9687	24.6049
15/64	.2344	5.9538	31/64	.4844	12.3037	47/64	.7344	18.6538	63/64	.9844	25.0037
1/4	.2500	6.3500	1/2	.5000	12.7000	3/4	.7500	19.0500	1	1.000	25.4000

COMMON CONVERSIONS

MEASURE	BY	TO OBTAIN
millimetres	0.03937	Inches
millimetres	0.003281	Feet
metres	3.281	Feet
Inches	25.4	millimetres
Feet	304.8	millimetres
Feet	0.3048	metres
Miles	1.609	kilometres
Square millimetres	0.00155	Square Inches
Square metres	10.764	Square Feet
Square Inches	645.2	Square millimetres
Square Feet	0.0929	Square metres
kilograms	2.2046	Pounds
metric tonnes	1.102	Short Tons
Pounds	0.4536	kilograms
Short Tons	0.907	metric tonnes
kilopascals	20.89	Pounds per Square Foot
megapascals	0.145	Kips per Square Inch
Pounds per Square Foot	0.0479	kilopascals
Kips per Square Foot	6.895	megapascals
kilograms per lineal metre	0.6667	Pounds per lineal Foot
Degrees Celsius	(X 1.8) + 32	Degrees Fahrenheit
Degrees Fahrenheit	(-32) X .55	Degrees Celsius